

Table 4.1
Economies of scale in bulk carriers

Ship size (thousand dwt)	15	25	41	61	120	200
Index of size	100	167	267	432	793	1318
Capital cost index	100	140	197	291	457	641
Operating cost index (excluding fuel)	100	121	134	155	201	275
Seagoing fuel consumption index	100	155	230	353	578	843
Crew size	31	38	38	38	38	38

Source: Goss and Jones (1971)

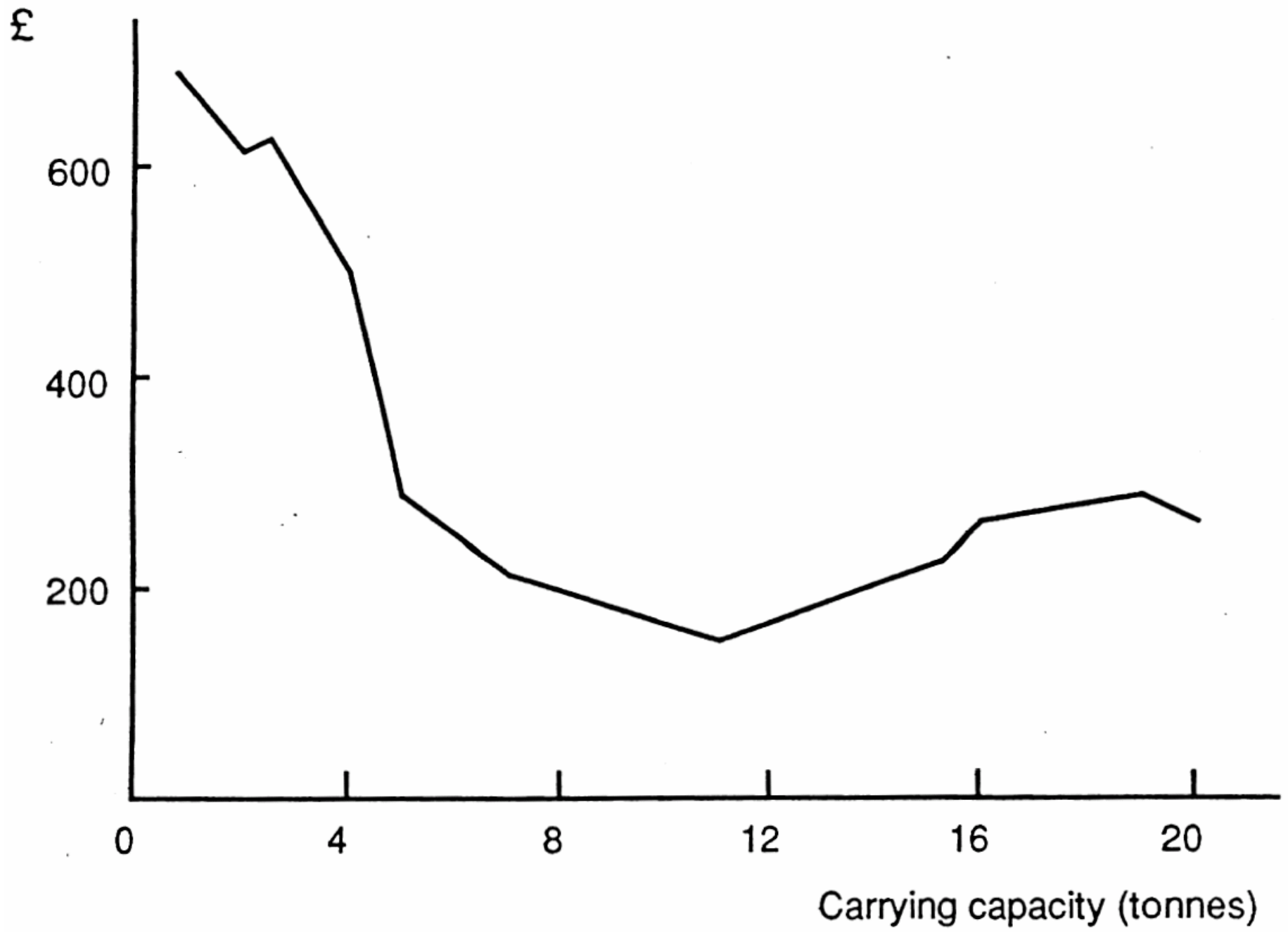


Table 4.3**Economies of large port operations**

	<i>Vancouver</i>	<i>Seattle</i>
Traffic (1973)	88000	377000
Number of berths	3	11
Wharfage 埠位 (費用) 每	23.63	33.75
Handling and through port charge	81.27	40.00
Vessel service and facility charge	0	26.60
Tailgate loading	22.28	0
Total of port charges per container	127.18	95.35

Source: Heaver (1975)

Table 4.4

Annual costs per mile of rail track (1967 prices)

	<i>Number of Tracks</i>		
	<i>1</i>	<i>2</i>	<i>4</i>
Interest	£3020	£4260	£7900
Revenue of track and structure	£1400-2840	£1896-3442	£3422-4474
Signalling	£2600	£4030	£8060
Total	£7020-8460	£10190-11730	£19380-20430

Source: Foster and Joy (1967)

Table 4.6

US and European air costs levels (1983)

<i>Cost item</i>	<i>Passenger cost (US cents per seat kilometres)</i>	
	<i>Intra-Europe</i>	<i>US domestic</i>
Crew	0.82	0.49
Fuel	1.33	1.09
Maintenance	0.68	0.41
Depreciation	0.39	0.30
Landing fees and <i>en route</i> charges	0.84	0.27
Station and ground	1.09	0.73
Passenger services	0.41	0.31
Ticketing, sales and promotion	1.53	0.71
Others	0.43	0.18
Total	7.52	4.49

Source: International Air Transport Association (1988)