

# Graduate School of Economics and Faculty of Economics, Kyoto University

URL <http://www.econ.kyoto-u.ac.jp>

京都大学大学院経済学研究科・経済学部

Graduate School of Economics and Faculty of Economics, Kyoto University

TEL.+81-(0)75-753-3400 FAX.+81-(0)75-753-3492

京都大学大学院経済学研究科  
経済学部



伝  
デントウ  
統

カ  
ク  
シ  
ン  
革 新



京都大学  
KYOTO UNIVERSITY

2016-2017





# 伝統

## tradition

The traditional industries found in Kyoto today originated in part from the court artisans of the Heian period, who manufactured implements required for the imperial court's governmental and ceremonial functions and objects to signify the court's authority. These traditions of artisanship developed in Kyoto together with a distinctive culture of refinement. Beginning with the Onin War in the 15th century, Kyoto was torn by years of conflict and countless natural catastrophes, yet the city continued to foster a diversity of techniques, methods and designs that grew increasingly sophisticated as the old ways were challenged and reinvigorated by the new. By the Edo period, Kyoto was flourishing as the foremost center of handcraft industry in Japan. Maintained and passed down through subsequent upheavals such as the Meiji Restoration and Second World War, Kyoto's traditional industrial techniques and aesthetics came to inspire the creation of a variety of new cutting-edge industries.

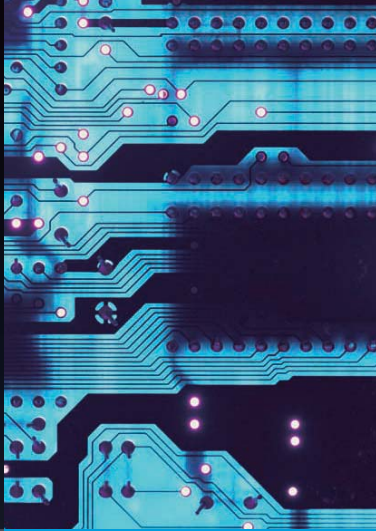
(Source: City of Kyoto, ed., *Second Kyoto Traditional Industry Revitalization Plan* [2012])

- ① **Kyo-yaki/Kiyomizu-yaki** originated from the ceramics dating from around the 8th century and are characterized by their use of a wealth of base materials and myriad decorative techniques and designs. (Source: City of Kyoto, ed., *Our Traditional Industries* [2015])
- ② **Kata-yuzen** (stencil dyeing) involves the production of a colored paste from synthetic dyes and printing paste for creating artistic patterns with paper stencils. (Source: City of Kyoto, ed., *Our Traditional Industries* [2015])
- ③ **Kyo-kumihimo** (braided cord), dating from the Heian period, has long been utilized in ceremonies and other aspects of religious life. The craft employs a multitude of braiding techniques to suit a variety of applications. (With the cooperation of Showen™ Kumihimo)
- ④ **Kingin-shi** are gold and silver threads created by using lacquer to paste gold foil onto Japanese washi paper, which is then cut into thin strips for use in textiles and embroidery. The examples can be seen among the imperial objects held by the Shosoin Repository in Nara. (With the cooperation of the Gold and Silver Threads Industry Cooperative Association)
- ⑤ **Plating**, a technique applied to the Great Buddha of Todai-ji Temple, has long been used in a variety of craft products. In recent years, plating techniques have evolved into **electroforming technologies**. (With the cooperation of Takagi Kinzoku Co., Ltd.)
- ⑥ **Brewing of sake** flourished in Kyoto in the 16th century. While traditional techniques have been preserved and handed down through the generations, sake brewing also involves advanced quality control informed by a variety of analytical data.
- ⑦ Traditional woven textiles, known as **Nishijin-ori** are created by skilled artisans each of whom specializes in a specific part of the weaving process, enabling a wide range of weaving types for particular applications to be produced. (Source: City of Kyoto, ed., *Our Traditional Industries* [2015])
- ⑧ Photo: A **Kyo-yaki/Kiyomizu-yaki** ceramic bowl from the collection of City of Kyoto, with the cooperation of the Kyoto Museum of Traditional Crafts Fureaikan



①	②	③
④	デントウ	⑤
⑥	⑦	⑧





# 革新

## innovation

The many so-called traditional industries that exist in Kyoto today are sustained not simply by inherited traditions; they are a product of ongoing self-innovation in response to the challenges of the times. Even in the field of cutting-edge technology, more than a few of today's successful companies have evolved from traditional enterprises. This success has been made possible to a great extent by the existence of skilled artisans in traditional industries, and by Kyoto's long-established status as a cradle of research and learning. Armed with a stock of technology and capacity for research and development, and keen to generate novel approaches, the entrepreneurs and business managers of Kyoto have carved out new directions for our city.

(Source: City of Kyoto, ed., *Vision for Industrial Development in Kyoto City* [1995])



カクシン



① Ceramics manufactured through application of the production techniques used for **Kyo-yaki/Kiyomizu-yaki** are used as ceramic heat sinks for large-scale LED lighting installations. (Photo: The Tokyo Skytree with LED illumination)

② High-precision and high-density printed circuit boards (PCB) have been developed through application of techniques originally employed in manufacturing the paper stencils used in **Kata-yuzen** textile dyeing. (With the cooperation of KYOTECH Co., Ltd.)

③ Application of the **Kyo-kumihimo** braiding structure gives enhanced strength and lightness to the carbon shafts of golf clubs.

④ Anti-reflective films for use in liquid crystal displays have been developed through application of more recent vapor-depositing techniques originally employed in producing the **Kingin-shi** threads. (With the cooperation of OIKE & Co., Ltd.)

⑤ Ultra-thin, smooth outer blades for electric razors have been developed through application of **electroforming technologies** that have enabled the manufacture of particular precision components.

⑥ Biochemical kits have been developed through application of brewing analysis techniques used in **sake production**. (With the cooperation of Nacal Tesque, Inc.)

⑦ Woven carbon fiber materials used in automobile interiors and exteriors are produced by utilizing the advanced weaving techniques used in **Nishijin-ori**. (With the cooperation of Fukuoka Weaving Co., Ltd. and Netz TOYOTA HYOGO Co., Ltd.)

⑧ Monolithic ceramic capacitors (MLCC) have been developed through application of techniques used in **Kyo-yaki/Kiyomizu-yaki** ceramics production. (Photo: Murata Cheerleaders; with the cooperation of Murata Manufacturing Co., Ltd.)

Cooperation with Kyoto Municipal Institute of Industrial Technology and Culture and Kyoto Industry-Academia-Government Cooperative Organization



①	②	③
④	カクシン	⑤
⑥	⑦	⑧





105 演習室



キョウイク・ケンキュウ

# 教育・研究

education and research

We welcome a diversity of students, including many international students, and ensure that each one of them leaves us enriched by their educational experiences here in Kyoto, an environment that combines the best of both the old and the new. Our education is based on the research activities of 50-plus faculty members engaged in cutting-edge studies across various fields of economics. Our strengths lie in a combination of tradition and innovation that befits our location in Kyoto, and in a liberal intellectual atmosphere fostered throughout the Faculty's long history. On the basis of these strengths we have built a record of excellence, and our education and research is held in high regard both within and beyond Japan.

Graduate School of  
Economics and  
Faculty of  
Economics,  
Kyoto University



# Studying Kyoto Tradition and Innovation in Business



**Yoshinori Hara**  
Professor,  
Graduate School of Management

## “Omotenashi” and Service Innovation

In our lab we study an innovation management procedure seen particularly inside Japanese Creative Services. They include shops of long standing, Japanese cuisines, traditional cultural activities, Cool Japan, etc., which are typical examples of high-context communication services. A fundamental capability of this sort is “Omotenashi,” the Japanese hospitality and customer service that entails a process of co-creating values through the interaction between the service provider and consumer. In studying “Omotenashi,” we start by employing an interdisciplinary approach that integrates the humanities and sciences, including the use of service science concepts, to unravel the individually-dependent factors in “Omotenashi,” and apply the latest insights from neuroscience towards tacit knowledge education. We then apply the findings of this research to help avert the problems of commoditization (value denigration) of goods and services in today’s mature society, and strive to pursue education on service innovation to enhance the globalization of the Japanese Creative Services.



**Kazuo Hori**  
Professor,  
Graduate School of Economics

## Introducing the Activities of the Economic Research Office

The Economic Research Office is designed to function as an archive of resources related to economics and management in the Kyoto region. One of its major holdings is a collection of materials on the Fushimi Sake Brewers Association. The Fushimi district in Kyoto is one of Japan’s foremost centers of the traditional Japanese industry of sake production, and is home to many long-standing brewing firms. In 2013 the Office was commissioned to collate and make available around 6,000 documents produced and compiled by these breweries and the association from the Edo period to the 1940s. This collection is useful for a wide range of purposes not only in historical research on commercial distribution and the sake industry’s exceptional growth in the modern era, but also in studies of business innovation and market analysis in the industry. The Office also collects other materials on distinctive Kyoto industries and businesses. In addition to its contributions to academic research, the Office assists the Kyoto community to hand down its legacy to new generations by preserving economic and management materials.



**Takanori Ida**  
Professor,  
Graduate School of Economics

## Next-Generation Urban Development in the Keihanna Region

The concept for the Kansai Science City was initiated in 1994 with the goal of developing a new hub for cultural, academic, and research-related activity across the Keihanna Hills region, which straddles the three prefectures of Kyoto, Osaka, and Nara. Construction of the city was pursued as a national project involving collaboration among industry, academic, government, and civil society, and the city is now home to world-class institutions of academic research and centers for international exchange. In 2010 the city was selected to participate in a Smart Community Verification Experiment Project organized by partners including the Ministry of Economy, Trade and Industry, Kyoto Prefectural Government and the Kansai Electric Power in response to the energy crisis following the Great East Japan Earthquake disaster. Under this project a demand-response system was established whereby the electricity price is raised and lowered in response to fluctuations in supply and demand, enabling peaks in power demand to be cut. My lab was authorized as the team responsible for assessing economic effects for this project, and we play a leading role in design and operation of field experiments. We will continue our work to achieve smarter approaches to life across environmental, medical, and educational fields.

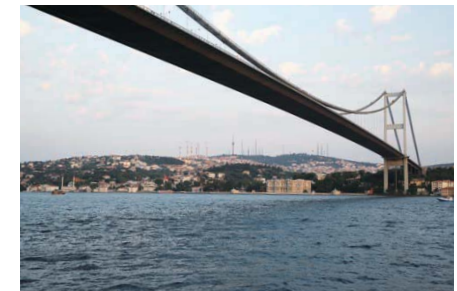


**Hidetaka Kawakita**  
Professor,  
Graduate School of Management

## The Significance of Selecting and Investing in Kyoto-based Corporations

As the growth rate of the Japanese economy declines, major disparities in the business performance of Japanese corporations have emerged. Share market investors need to keep this growing disparity in mind when making their investment decisions.

One of my research interests involves a focus on the performance of investments in selected Kyoto-based corporations. I have endeavored to combine orthodox methods of data analysis with qualitative perspectives gained through talking with Kyoto’s top business managers. So far, this research has revealed two key characteristics of corporations headquartered in Kyoto: a commitment to enhancing existing technologies (especially among precision instrument manufacturers), and a pro-active approach towards overseas business development. The profitability of capital investments in these corporations is high, and on a risk-return basis it appears that investing in Kyoto-based corporations is an efficient strategy.



There’s no royal bridge (road) to success in capital markets.  
(Photo: The Bosphorus Bridge in Istanbul)



# Message

## Welcome Message from the Dean: Tradition and Innovation

**Se-il Mun**

Dean of the Graduate School of Economics and Faculty of Economics



Founded in 1919, the Faculty of Economics is one of the oldest faculties of its kind in Japan. The research and education conducted at this Faculty over the course of its nearly century-long history has contributed tremendously to the development of the study of economics. Our successive generations of faculty members, each endowed with tremendous personality, have carried out unique and innovative research, which they have then passed on through their teaching. The numerous economists who have completed their studies at Kyoto University and have gone on to carry out research in universities throughout Japan and the world are now leaders in the field. Our strengths lie in a combination of tradition and innovation that befits our location in Kyoto, and in our liberal intellectual atmosphere fostered throughout the Faculty's long history. In recent years, we have been actively hiring talented young faculty members, and are producing cutting-edge research results.

More than 1,000 students are currently enrolled in the Faculty of Economics, which offers a systematic curriculum that builds a deep level of expertise accumulated as students progress from introductory to advanced courses, as well as a broad interdisciplinary approach as classes are categorized into four concentrations and students have the flexibility to enroll in courses in related disciplines. From early on, we have emphasized importance of small-group education and we offer seminars at every academic level. In recent years, many students are also studying abroad at universities that have agreed to waive tuition under academic exchange agreements signed with our university. We are producing exceptionally talented graduates who are playing an important role on the frontlines of global society, ranging from those who go on to graduate school in hopes of becoming researchers, to those who are working in Japanese and foreign corporations or in government agencies.

The Graduate School of Economics, which was established in 1953, currently has more than 250 graduate students enrolled, of whom nearly 100 are international students. These students are pursuing a Doctoral degree through a five-year integrated educational program. The Graduate School starts with basic courses called the Core Courses, and then offers an array of advanced courses divided into six concentrations. Once the students have mastered theoretical and empirical economic analysis, they aim to complete a Doctoral dissertation under the direction of a Doctoral Dissertation Committee. Also, the International Graduate Program for East Asia Sustainable Economic Development Studies, which was created in 2009, draws talented students from around the world and offers classes in English.

The Faculty provides an exceptional environment in which to study economics. Our intellectual infrastructure offers students a library that houses more than 570,000 books, papers, and periodicals, as well as access to databases and electronic journals via our Wi-Fi network.

The Faculty allows students to enroll through various admissions methods, including regular admissions, thesis admissions, science/engineering student admissions, admissions for international students and for Japanese graduates of schools outside Japan, as well as admissions for third-year advanced entry students. The student body that this engenders—including people with a strong grounding in the arts, people who are exceptionally talented in the sciences, and people from various countries and academic backgrounds—is among the most diverse even within Kyoto University. It is a well-known theory that enhancing communication among heterogeneous agents can stimulate the creation of new knowledge, thereby contributes to economic growth. When students from a broad range of backgrounds meet in seminars and other forums, diligently interact, and debate with their instructors and senior classmates, it brings about personality development and trains them as individuals who can be key-players in the knowledge-creating society. We treasure that space and are constantly working to further expand and enhance those opportunities.

We at the Graduate School of Economics and Faculty of Economics value diversity, and our doors are always open to students who are endowed with an abundance of humanity and creativity.

# Faculty of Economics, Kyoto University





## Educational Mission

The Kyoto University Faculty of Economics upholds Kyoto University's mission of fostering creativity and transmitting preeminent knowledge through independent learning. More precisely, the faculty's educational mission is to cultivate individuals who are capable of applying specialized knowledge to tackle complex challenges in our contemporary economy and society; prepared to contribute to harmonious coexistence in the global community; and filled with a great deal of compassion, sensitivity to human rights, and integrity to advocate for fairness.

## Educational Objectives

In order to accomplish its educational mission, the Kyoto University Faculty of Economics works to carry out and achieve the objectives set forth below.

1. We will attract students with diverse individual characteristics and cultural backgrounds through a variety of admission processes, foster graduates with **flexible and diverse outlooks and capabilities in economics and management**, and supply them to a wide range of fields in society.
2. We will develop a multi-dimensional curriculum that both equips students with broad-based foundations in the disciplines of economics and management and cultivates **flexible thinking and creativity**. In the delivery of this curriculum we will place emphasis on seminar-style education and provide both individual guidance and group-based learning.
3. We will strive to enhance our **advanced specialist education**, employing the latest findings from economics and management research across the world in collaboration with the Graduate School of Economics.
4. We will pursue the development of **advanced, practical capabilities in economics and management** through research and education partnerships with government bodies, private companies, and not-for-profit organizations.
5. We will work to foster individuals with **international capabilities to contribute to sustainable economic development** under the globalization of the economic sphere.
6. We will use these educational activities as a whole to instill basic and specialized academic abilities attuned to our changing times, and work to cultivate individuals filled with **a great deal of compassion, sensitivity to human rights, and integrity to advocate for fairness**.

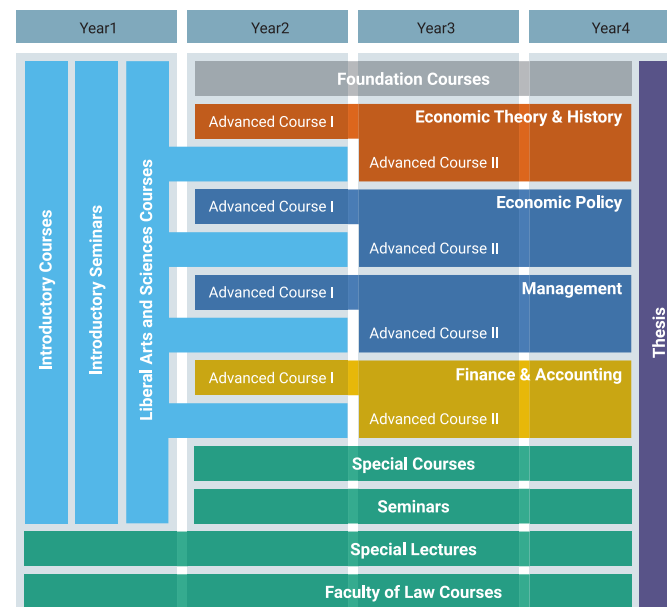
Please refer to the following website for more about our missions and objectives:  
<http://www.econ.kyoto-u.ac.jp/en/about/idea/>



## Faculty Curriculum

The Faculty of Economics offers **four concentrations**: Economic Theory & History, Economic Policy, Management, and Finance & Accounting. Students are able to develop specializations through study in accordance with structured curriculum models. This is a flexible system, under which students achieving excellent grades in each concentration are accredited for its completion. Regular courses in the Faculty are divided into the categories of Introductory Seminars, Introductory Courses, Foundation Courses, Advanced Courses I, Advanced Courses II, Faculty of Law Courses, and Special Lectures, and are basically organized so as to enable incremental learning.

### Curriculum models



Since its establishment, the Faculty has emphasized **seminar-style teaching** and has developed interactive learning systems that enable instructors to engage with small groups of students. In the small-group seminar classes, students take the lead in presenting on and debating various topics under the guidance of their instructor, thereby developing the creativity and intellectual capacity to elucidate the true nature of problems.

Students who have earned the prescribed number of credits after being enrolled for at least four years (at least two years for 3rd Year transfer students) are accredited as having passed their Bachelor's degree examinations and are awarded the degree. A minimum of 124 credits is required for graduation, including at least 40 credits in Liberal Arts and Sciences Courses and at least 84 credits in Advanced Courses of the Faculty. Students may also choose to complete graduation theses, for which six credits are awarded.



There are no compulsory courses in the Faculty of Economics. This reflects the Faculty's policy of encouraging **free and open learning**. Completion of a graduation thesis is also optional but, from the 2010 academic year, we have been encouraging more students to pursue graduation theses by offering awards for outstanding efforts.

In 2013, we established the **Office for Student Affairs** for students of the Faculty of Economics and Graduate School of Economics. Here, students can seek advice on various problems and concerns that they may encounter in the course of their university lives. We also established the **International Student Support Office** for international students studying in the Faculty of Economics and the Graduate School of Economics. The support services offered by this office include course-related support (information on course content, advice on literature search methods and study strategies, Japanese proofreading of essays, etc.) and administrative support (course registration, assistance with administrative procedures, scholarship information, etc.), as well as assistance in locating facilities on campus, explanation of visa-related documents, and consultations for job-seekers. International students can still ask questions and seek advice by email, even when the office is closed for the spring, summer, and winter vacations.



#### Endowed Lectures

The Faculty of Economics offers a number of endowed lectures: practically-oriented classes featuring invited external experts. These are taught by professionals working at the front lines of professional practice, sometimes including corporate top management.

- "Advanced Banking" by Mizuho Financial Group, Inc.
- "Investment Banking Practice and Global Strategies" by Sumitomo Mitsui Banking Corporation
- "Kyoto Economics" by Bank of Kyoto, Ltd.
- "The Law and Practice of Asset Management" by the Japan Investment Advisers Association and The Investment Trusts Association, Japan
- "Corporate Value Creation and its Valuation" by Norinchukin Value Investments Co., Ltd.



## Graduate School of Economics, Kyoto University





## Educational Mission

The Kyoto University Graduate School of Economics upholds Kyoto University's mission of educating outstanding researchers and specialists who will contribute to harmonious coexistence within human and ecological communities. More precisely, the graduate school's educational mission is to cultivate specialists who are capable of applying insights, knowledge, and techniques based on economics to tackle complex challenges in our contemporary economy and society; prepared to contribute to the global community; and filled with a great deal of compassion, sensitivity to human rights, and integrity to advocate for fairness.

## Educational Objectives

In order to accomplish its educational mission, the Kyoto University Graduate School of Economics works to carry out and achieve the objectives set forth below.



1. The Graduate School of Economics is composed of a Master's program and a Doctoral program. In the Master's program, students aspiring to a career in academic research take classes and receive individual guidance on writing a Master's thesis. We aim to introduce students to the wealth of existing scholarship in economics and related fields, and to equip them with the **basic academic expertise and analytical skills essential for independent research**.
2. Operated in an environment where freedom and autonomy are valued, the Doctoral program provides research guidance to students seeking to obtain a Doctoral degree in economics following the completion of their Master's degree. The aim of the program is to cultivate researchers capable of **boldly tackling new challenges in the field of economics and key problems in social and economic spheres, and thereby addressing the needs of wider society**.
3. In order to accomplish our mission and objectives, our faculty members with diversified and advanced expertise provide a broad-based education encompassing economic philosophy, theory, history, and policy, as well as fields such as applied economics and managerial accounting. We will thereby foster students' **capacity to build knowledge systems that provide broader insights for their own research** without over-specialization in any one academic field.
4. We will train our students **not only to pursue their research in depth, but also to apply a strong sense of responsibility and high ethical standards to that research**, constantly subjecting it to critical examination to ensure that it is consistent with the goal of harmonious coexistence of humanity and nature. Through individual guidance, seminars, and projects, students will be encouraged to develop the sense of fairness, tolerance, and deep compassion required to perform leadership roles in education, academic research, and other fields in the future.
5. We will use a variety of admission streams to build a graduate student cohort that is internationally diverse in terms of individual characteristics, careers and cultures, and foster **experts in the analysis of problems in economics and management from international perspectives**.
6. We will cultivate economists, business analysts, and other professionals with **practical ability to furnish world-class, realistic solutions to complex economic and management challenges both in Japan and across the world**.
7. We will use these educational activities as a whole to cultivate research capabilities attuned to our changing times.

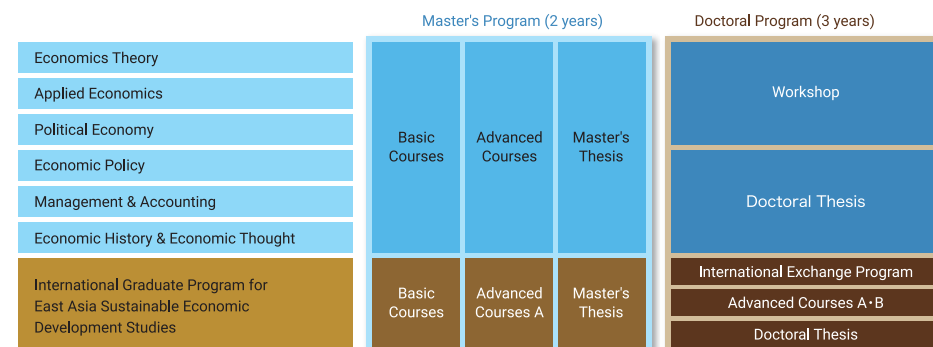
Please refer to the following website for more about our missions and objectives:  
<http://www.econ.kyoto-u.ac.jp/en/about/idea/>

## Graduate School Curriculum

The primary objective of the Graduate School is to cultivate academic researchers through a **five-year integrated program** of research training.

The Master's program is made up of Basic Courses, Advanced Courses, and Special Lectures. It has **six concentrations** that provide curricular models indicating which basic courses are recommended and which advanced subjects are associated with each concentration.

In the Doctoral program, the Doctoral Dissertation Committees comprising two or more faculty members for each student provide individual supervision to ensure that students are able to complete their dissertations in three years. **Workshops** are also organized to provide students with opportunities to present their research-in-progress and to foster high-level discussion and productive interaction.



In 2009, we launched the **International Graduate Program for East Asia Sustainable Economic Development Studies**, with an academic year beginning in October rather than in April, and with English used as the common language. This program focuses on multi-faceted, interdisciplinary, international research into economic issues facing Japan and the rest of East Asia. Students completing the program become academic researchers and professional economists capable of formulating practical solutions to social and economic problems, and of contributing to sustainable development in the region.

The Graduate School of Economics has conferred a cumulative total of 1,737 Master's degrees and 1,006 Doctoral degrees (as of March 2016). Most of these alumni are working as professional researchers in universities, think tanks, and other academic organizations, either within or outside of Japan.



## International Graduate Program for East Asia Sustainable Economic Development Studies

The International Graduate Program for East Asia Sustainable Economic Development Studies consists of a two-year Master's program and a three-year Doctoral program, both starting in October. Our students are from a variety of countries including China, Germany, Indonesia, Italy, Malaysia, Philippines, Mexico, South Korea, Thailand, Turkey, Egypt, UK, USA, Viet Nam and Japan.

The program is offered in English, and Japanese language skills are not required at the time of admission. The Master's program offers both basic and advanced courses through which students can experience a comprehensive curriculum. The Doctoral program offers Overseas Field Research and International Graduate Student Workshop classes through which students can develop a deeper understanding of current issues in East Asia.

In addition to courses designed specifically for this program, students will participate in selected courses at the Graduate School of Economics as well as other graduate schools. Students will develop their academic knowledge and practical skills in an international setting. We offer many opportunities to conduct field research at a diverse range of sites such as large manufacturing plants and small factories, cutting-edge businesses and rural farming communities throughout East Asia so that students can develop a **multidisciplinary and critical appreciation of real-life issues and problems**. These are all essential skills that they will need in order to **contribute to sustainable development in East Asia as academic researchers, government officials or social entrepreneurs**.

Please refer to the following website for more information on the program:  
<http://www.econ.kyoto-u.ac.jp/kueac/>



International Course for East Asia Sustainable Economic Development Studies 2016-2017 Academic Year Course List

Course Title	Instructor(s)	Credits				Compulsory or Elective
		2016/17 Spring		2016/17 Autumn		
		I	II	I	II	
Field Research in Japan A	Tokumaru/Inoue/Tanaka/Hisano/Lambino/Vixathep			1		Compulsory
Field Research in Japan B	Tokumaru/Shioji/Kurosawa/Hisano/Vixathep	1				Compulsory
Research Design A	Inaba			2		Elective
Research Design B	Maswana	2				Elective
Introduction to East Asian Economies	Yano/Nakano/Ohnishi			2		Elective
Firms and Industrial Organization in Japan	Hikino/Colpan			2		Elective
Microeconomics	Chiba	2				Elective
Macroeconomics	Yuki	2				Elective
Econometrics	TBA					Elective
Political Economy	Yang/Uni			2		Elective
Economic History	Sakade/Watanabe/Kurosawa					Elective
Comparative Industry Policy Studies	Kurosawa/Hisano			2		Elective
Comparative Business Ethics	Tokumaru		2			Elective
Academic Writing & Discussion	Tokumaru	2				Elective
Introduction to Field Research Methods	Vixathep		2			Elective
Accounting	Tsay			2		Elective
Japanese Economic History	Watanabe					Elective
Econometric Analysis of Asian Economies	Yano	2				Elective
Econometric Analysis of Developing Economies	Yano			2		Elective
Contemporary Japanese Industry Studies	Shioji			2		Elective
Contemporary Chinese Economy Studies	Liu	2				Elective
International Political Economy of Agriculture	Hisano			2		Elective
International Agribusiness Studies	Hisano	2				Elective
International Finance Theory	Iwamoto			2		Elective
International Trade Theory	Jinji	2				Elective
Development Economics 1	Kono			2		Elective
Development Economics 2	Kono	2				Elective
Macroeconomic Policy Analysis	TBA					Elective
Environmental Economic Studies	Ito/Toujpu/Morotomi	2				Elective
Sustainable Development Studies	Morotomi			2		Elective
Social Policy Studies	Hisamoto					Elective
Study of Developing Economies (Seminar)	Mieno	2				Elective
Study of Emerging Economies (Seminar)	Mieno			2		Elective
Comparative Development Studies	Hisano/Jussaume/Fonte			2		Elective
Economic Development in Asia: Sustainable Industry Development	Lambino/Clarence-Smith	2				Elective
Agricultural Science and Society	Hisano/ Schakel					Elective
International Business and Nation States	Kurosawa/Wubs			1		Elective
Historical Approaches to Business and Economics	Kurosawa/Wadhvani/Lubinski			1		Elective
Comparative Studies on East Asian Economic Development	Uni/Kim	1				Elective
Agrarian Change and Peasant Studies	Hisano/van der Ploeg	2				Elective
Spatial Thinking in Social Sciences	Hisano/Jongerden/Simsek		1			Elective
International Business	Colpan	2				Elective
Strategic Management	Colpan					Elective
Corporate Finance and Capital Markets	Kumagai	2				Elective
Political Economy of Biotechnology Development and Commons	Hisano/Ruivenkamp					Elective
Governance, Risk Management & Compliance	Hikino	2				Elective
Readings on Institutional Economics	Ilnazov			2		Elective
Readings on International Economics	Ilnazov	2				Elective
Comparative History of Economic Policy B	Kurosawa			2		Elective
Readings on Organizational Behaviour	Inaba					Elective
Readings on Human Resources	Inaba			2		Elective
Environmental Economics	Inoue	2				Elective
Environmental Management	Inoue			2		Elective
ASEAN Economy & Sustainable Development 1	Lambino		2			Elective
ASEAN Economy & Sustainable Development 2	Vixathep			2		Elective
Geopolitical Economy of Development	Lambino	2				Elective
Sustainable Development and Ethics	Choy		2			Elective
Global Financial Crisis and Asia	Lambino/Nidhrabha					Elective
Overseas Field Research	Hisano/Yano/Tokumaru			2		Elective
Internship	Tokumaru/Inoue			2		Elective
Investment and Portfolio Management	Guedhami			2		Elective
Economics for Business and Public Issues	Altug			2		Elective
Field Research in East Asian Region B (Korea)	Tokumaru /Shioji					Elective
Field Research in East Asian Region C (ASEAN)	Hisano/Lambino		2			Elective
International Graduate Student Workshop	Hisano/Yano/Tokumaru		2			Elective



# Academic Calendar 2016

Illustrated by 'Kyoto University Manga Club'

- Dates applicable to both Faculty and Graduate School
- Faculty dates
- Graduate School dates

# 4

## APRIL

- Entrance Ceremony (Apr 7)
- Orientation for New Students
- First Semester Classes Start
- First Semester Course Registration
- Periodical Health Checkup
- Submission of Doctoral Research Proposal



# 5

## MAY

# 6

## JUNE

- Foundation Day (Jun 18)

# 7

## JULY

- First Semester Examination Period (Jul 22 - 28)
- Submission of Master's Thesis (EA Program)
- Submission of Doctoral Research Report (EA Program)



# 8

## AUGUST

- Summer Vacation (Aug 6 - Sep 30)

# 9

## SEPTEMBER

- First Semester Ends (Sep 30)
- Admission Examination for Master's Program
- Graduate School Degree Conferment Ceremony (EA Program)



Sakura and the Philosopher's Path by Sashimi Akai

# 10

## OCTOBER

- Second Semester Classes Start
- Second Semester Course Registration
- Entrance Ceremony / Orientation (EA Program)
- Submission of Doctoral Research Proposal (EA Program)



# 11

# 1

## JANUARY

- National Center Test for University Admissions (no classes Jan 13 due to preparation)
- Second Semester Examination Period (Jan 25 - 31)
- Special Examination for Admission to Undergraduate Program
- Submission of Master's Thesis
- Submission of Doctoral Research Report
- Examination for Advanced Entry to Doctoral Program
- Special Examination for Advanced Entry to Doctoral Program for Working Graduate Students

# 12

## DECEMBER

- Winter Vacation (Dec 29 - Jan 3)

# 2

## FEBRUARY

- Admission Examination for Undergraduate Programs (Feb 25 - 26)
- Special Admission Examination for International Students

# 3

## MARCH

- Second Semester Ends (Mar 31)
- Graduation Ceremony (Mar 24)
- Graduate School Degree Conferment Ceremony (Mar 23)



A Ginkaku-ji Temple reflection and Momiji leaves by Miyuki Samuhara



A Summer view from Kiyomizu Temple by Thebutton



A winter walk along Machiya by Chapeau Yoneda



# International Academic Relations

## Academic Relations at Graduate School and Faculty Level

Kyoto University has university-level cooperative agreements with 148 universities, four university alliances and ten other institutions across a total of 49 countries, regions and organizations worldwide (as of August 2016). In addition to these agreements, the Graduate School of Economics and Faculty of Economics advance international academic relations through their own agreements with partners at universities and research institutes outside Japan.

## International Student Mobility

Many international students study at the Faculty of Economics and Graduate School of Economics. We also send many of our students to study abroad. For more information on student numbers and regions, please refer to the Facts & Figures section at the end of this booklet.



# Japan Gateway: Kyoto University Top Global Program

Kyoto University has been selected for the 2014 Top Global University Project, a higher education reform initiative launched by Japan's Ministry of Education, Culture, Sports, Science and Technology (MEXT). Kyoto University's reform initiative is called "Japan Gateway: Kyoto University Top Global Program." The Japan Gateway initiative focuses on the following research areas: mathematics, chemistry and chemical engineering, human biosciences, social sciences and humanities.

The discipline of social sciences and humanities covers three graduate schools: the Graduate School of Economics, the Graduate School of Letters and the Graduate School of Agriculture. Together, these three graduate schools have established the "Asian Platform for Global Sustainability & Transcultural Studies (AGST)" and seek to cultivate the development of **globally minded individuals with the capacity to contribute to the sustainable development of Asia and the world.**

World-leading researchers from partner institutions are invited to collaborate on the development of teaching materials for the AGST. Following this, jointly implemented courses using these teaching materials will be established and, together with pre-existing courses, will be part of an expanded cross-credit scheme. This educational structure will also provide the basis for development of joint/double degree programs with partner institutions.

Please refer to the following website for more information on the AGST:  
<http://agst.jgp.kyoto-u.ac.jp/>

# Affiliated Organizations

There are a number of organizations affiliated with the Graduate School of Economics that furnish support for various activities to advance research and education.

**The Project Center** was established in November 2000 to coordinate project-based research initiatives and contribute to the enhancement of education and research across the disciplines of economics and management. Currently the Center oversees seven different projects, including collaborations with researchers and research organizations both within and outside the university. It also contributes to the training of young researchers by hosting numerous seminars and lunchtime workshops.

The 21st century is often referred to as the "Asian century." Especially, East Asia—including China—has been particularly gaining in stature within the region, and the interdependence between the economies of Japan and East Asia continues to deepen. **The Center for East Asian Economic Studies** was established in 2002 in order to carry out research on the rapidly growing economies of China and other East Asian nations, build research networks within the region, share research findings with wider society, and pursue activities designed to cultivate personnel who will work in East Asia.



**The Mitsui-Sumitomo Finance Laboratory** was founded thanks to a donation from Sumitomo Mitsui Banking Corporation. It functions as one of the Graduate School's hubs for finance research and education, hosting research seminars and offering the Thomson Reuters Datastream service.



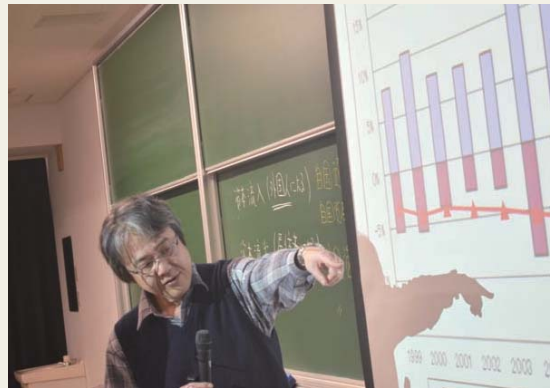
Our **Library** boasts a collection of around 574,000 volumes, as well as a diverse range of electronic journals and databases. An even wider variety of statistical databases can also be accessed through **the Economic Research Office**. This Office is also engaged in the archiving of historical data on businesses in Kyoto and the broader Kansai region.





## Seminars and Journals

**Departmental Seminars** are held regularly across eight broad academic fields: applied macroeconomics, applied microeconomics, economic history, accounting research, Asian economic development, international economics, Chinese economy, and Institutional economic dynamics. These seminars feature presentations by invited speakers active in the research sphere both within Japan and internationally, followed by lively discussion that cultivates understanding of cutting-edge issues, enables information-sharing, and enhances our network of research professionals. We also publish a *Discussion Paper Series* in order to communicate our research findings more widely.



**Kyoto University Economic Society** was founded in 1919 with the aim of advancing education and research in economics and management and disseminating the outputs therefrom. Membership of the Association is extended to both faculty members and graduate students. Its academic journal, *Keizai Ronso*, celebrates its 100th anniversary in 2015.

# 経済論叢



**The Kyoto Economic Review** was originally founded in 1926 as the first economic journal in Western languages in Asia. *KER* covers a variety of topics including advanced economic analysis, historical and philosophical perspectives in economics, and case studies of economic and administrative behavior.



## Joint Research Project

The Graduate School of Economics engages in Joint Research Project with the aims of generating innovative ideas in collaboration with private enterprises and making broader contributions to industry and society.

### Renewable Energy Economics

#### Outline and Aims

In this Joint Research Project we seek to extend and enhance the use of renewable energy through the development of a platform for research directed not only to overcoming technological hurdles, but also to designing social and economic systems that will promote renewable energy use. We will actively produce and disseminate proposals to inform policy development.

#### Partner

The Energy Strategy Institute Co., Ltd.

#### Period of Operation

April 1, 2014 – March 31, 2019



#### Research Members

**The Energy Strategy Institute Co., Ltd.**

Kimio Yamaka (Director, Project Professor)

Shuichi Kato (Senior Fellow, Former MP, Project Professor)

Katsuhiko Naito (Executive Advisor, Senior Fellow, Project Professor)

Yoh Yasuda (General Manager of Research Department, Project Professor)

#### Graduate School of Economics

Seichi Ogata (Project Assistant Professor)

Takuo Nakayama (Project Assistant Professor)

Toru Morotomi (Professor)

Kazuhiro Ueta (Professor)

## Alumni Association

Since its establishment in 1919, the Faculty of Economics has produced more than 24,000 graduates. The Alumni Association was formed in 1960 in order to cultivate fellowship and interaction among these graduates. In addition to an annual general assembly held in Kyoto, regional chapters of the Association throughout Japan organize reunions and other activities to enable active cross-generational exchange involving not only alumni but also current students, faculty and administrative staff.



# Faculty

① Fields of research ② Key words



**Se-il Mun**  
Professor

- ① Urban Economics, Transport Economics
- ② Transport Policies, Infrastructure, Urban Spatial Structure



**Yuya Akita**  
Senior Lecturer

- ① Intelligence Information Science, Spoken Language Processing
- ② Automatic Speech Recognition, Machine Learning, Deep Learning



**Saori Chiba**  
Senior Lecturer

- ① Microeconomic Theory
- ② Communications, Group Decision Making, Organization Design



**Asli M. Colpan**  
Associate Professor

- ① Corporate strategy, international business, corporate governance, business history
- ② Emerging markets, product diversification, business groups



**Masahiko Egami**  
Professor

- ① Financial Engineering, Applied Probability, Stochastic Optimization
- ② Stochastic Control, Fluctuations of Levy Processes, Credit Risk



**Hideki Fujii**  
Professor

- ① Accounting, Management
- ② Financial Accounting, International Accounting



**Yoshinori Hara**  
Professor

- ① Innovation Management
- ② Service Innovation, Knowledge Management, Research and Business Development



**Norio Hisamoto**  
Professor

- ① Social Policy, Industrial Relations
- ② Employment Relations, Labor Policy, Social Policy



**Shuji Hisano**  
Professor

- ① International Political Economy of Agriculture and Food
- ② Food Security, Food Governance, Agribusiness, Social Movement



**Kazuo Hori**  
Professor

- ① Modern Economic History of East Asia
- ② Modern Economic History of East Asia



**Takanori Ida**  
Professor

- ① Applied Economics
- ② Behavioral Economics, Social Experiment, Smart Grid



**Emiko Inoue**  
Senior Lecturer

- ① Environmental Economics, Environmental Policy
- ② Environmental Innovation and Incentives, Environmental Management, Sustainable Development



**Nobuyuki Isagawa**  
Professor

- ① Finance, Management
- ② Valuation, Value-Based Management, Corporate Governance



**Takekazu Iwamoto**  
Professor

- ① International Economics, International Finance
- ② Economic Policy



**Naoto Jinji**  
Professor

- ① International Economics
- ② Trade and the Environment, Trade/FDI and Technology Spillovers, Global Strategies of Firms



**Munechika Katayama**  
Senior Lecturer

- ① Macroeconomics
- ② Business Cycle, Monetary Policy, Estimation of DSGE Models



**Tatsuya Kikutani**  
Associate Professor

- ① Organizational Economics, Contract Theory
- ② Contract Theory, Personnel Economics, Firm Organization, Supply-Network, Subcontracting System



**Miyabi Kitada**  
Senior Lecturer

- ① Health Economics
- ② Junior Medical Residents, Mental Health, Economic Loss



# Faculty



**Hiroataka Kojima**  
Professor

- ① History of Economics
- ② Pigou's Theory of Business Cycle



**Hisaki Kono**  
Associate Professor

- ① Development Economics
- ② Poverty Reduction, Microfinance, Education, Market Transaction, Trade



**Takafumi Kurosawa**  
Professor

- ① Economic History
- ② Economic Policy, Business History, Socio-Economic History



**Masaki Kusano**  
Associate Professor

- ① Financial Accounting
- ② Fair Value, Performance Reporting, Economic Consequences, Recognition versus Disclosure



**John XXV Paragas Lambino**  
Senior Lecturer

- ① Political Economy
- ② Migration, Southeast Asia, Geopolitical Economy



**Deqiang Liu**  
Professor

- ① Development Economics, Chinese Economy
- ② Industrial Structure, Growth Pattern, Labor Shortage



**Hiroyuki Matsui**  
Professor

- ① Planning Theory
- ② Planning Theory, Decision Making Support, Gaming Simulation



**Soichiro Minami**  
Assistant Professor

- ① Public Finance, Environmental Economics
- ② Sustainable Transportation Policy, Social Common Capital, Environmental Public Participation



**Toru Morotomi**  
Professor

- ① Public Finance, Environmental Economics
- ② State Public Finance, Local Public Finance, Tax Reform, Environmental Policy Instruments, Environmental Tax, Emissions Trading



**Tatsuhiko Nariu**  
Professor

- ① Applied Microeconomics
- ② Industrial Organization, Marketing, Economics of Organization



**Masahiro Nei**  
Professor

- ① Contemporary Economic Thought
- ② Keynes, Schumpeter, Marshall



**Yuji Nishimuta**  
Professor

- ① International Business History
- ② Business History, International Business History



**Tomohiro Okada**  
Professor

- ① Regional Economy
- ② Regional Industry, Regional Development



**Sven Rudolph**  
Associate Professor

- ① Environmental Economics, Political Economy
- ② Climate Policy, Carbon Pricing, Policy Mix, Political Feasibility, Equity



**Takeshi Sakade**  
Associate Professor

- ① European and American Economic History
- ② Aircraft Industry, Nuclear Industry, International Political Economy



**Hiroaki Sasaki**  
Professor

- ① Economic Theory
- ② Economic Growth, Business Cycle, Structural Dynamics, Economic Development, North-South Trade



**Norio Sawabe**  
Professor

- ① Accounting
- ② Management Accounting, Management Control, Evolutionary Economics



**Tomoki Sekiguchi**  
Professor

- ① Human Resource Management, Organizational Behavior
- ② International Human Resource Management, Cross-Cultural Organizational Behavior, Managerial Psychology



**Tetsuro Shimamoto**  
Professor

- ① Monetary Economics
- ② Monetary Policy, Information, Mass Media



**Hiromi Shioji**  
Professor

- ① Automobile Industry
- ② Automobile Distribution and Marketing



**Toru Shirai**  
Assistant Professor

- ① Library and Information
- ② Documentation in Economics, Library and Information Science, History of Library



**Chihiro Suematsu**  
Professor

- ① IT, Business Creation
- ② Problem Solving, IT Business, Transaction Economics



**Yasuo Sugiyama**  
Professor

- ① Management
- ② International Management, Strategic Management, Technology and Innovation Management



**Akira Takeishi**  
Professor

- ① Strategic Management
- ② Strategic Management, Management of Technology, Innovation



# Faculty



**Hiroyuki Takezawa**  
Associate Professor

- ① European History of Social & Economic Thought, Early Modern British Intellectual History
- ② English Republicanism, James Harrington, The Early Modern Republicanism and its Relation to the Scottish Enlightenment, Modern European Debate on Luxury



**Akira Tanaka**  
Associate Professor

- ① Business History, Industrial Studies
- ② Sogo Shosha, Resource Network, Inter-Firm Relationship



**Yoshihiro Tokuga**  
Professor

- ① Accounting
- ② Financial Accounting, International Accounting



**Natsuka Tokumaru**  
Senior Lecturer

- ① History of Economic Thought
- ② History of Economic Thought



**Kazuhiro Ueta**  
Professor

- ① Public Finance, Environmental Economics
- ② Sustainable Development, Energy Policy, Local Public Finance



**Hiroyuki Uni**  
Professor

- ① Political Economy
- ② Institutional Economics, Variety and Transformation of Capitalism, Regulation Theory



**Naoki Wakabayashi**  
Professor

- ① Sociology of Organization
- ② Organization Behavior, Human Resources Management, Network Organization



**Yasunaga Wakabayashi**  
Professor

- ① Marketing
- ② Marketing, Distribution, Commerce



**Katsutoshi Wakai**  
Professor

- ① Microeconomics, Financial Economics
- ② Microeconomic Theory, Financial Economics, Behavioral Economics/Finance



**Yingyan Wang**  
Associate Professor

- ① Management
- ② Micro Organizational Behavior, International Human Resource Management, Organizational Social Psychology



**Junko Watanabe**  
Professor

- ① Economic History
- ② Pre- and Postwar Japanese Economic History, Economic History of the Modern World, Industrial Change and Adjustment



**Ken Yamada**  
Associate Professor

- ① Applied Microeconometrics, Labor Economics
- ② Household Behavior, Economic Inequality



**Yutaka Yamauchi**  
Associate Professor

- ① Organization Theory, Service Research, Design
- ② Social Interactions, Ethnomethodology, Culture of Services



**Go Yano**  
Associate Professor

- ① Developing Economies and Transition Economies
- ② Development Finance, Creation of Markets, Entrepreneurs



**Kazuhiro Yuki**  
Associate Professor

- ① Macroeconomics, Labor Economics
- ② Economic Growth and Development, Human Capital Theory, Income Distribution

**Hisako Inaba** Associate Professor

- ① Education, Management, Cultural Anthropology/Folklore Studies
- ② Educational Administration, Multi-Cultural Management, Cultural Anthropology



# Facts & Figures

## FACULTY

Position	Number
Professors	34
Associate Professors	14
Senior Lecturers	8
Assistant Professors	2
<b>Total</b>	<b>58</b>

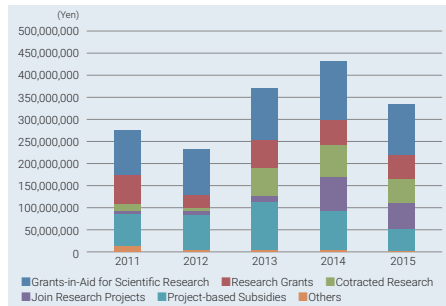
## ENROLLMENT

Academic Year	2012	2013	2014	2015	2016
Undergraduates	1,182	1,185	1,155	1,146	1,145
Graduates	240	254	257	252	241
<b>Total</b>	<b>1,422</b>	<b>1,439</b>	<b>1,412</b>	<b>1,398</b>	<b>1,386</b>

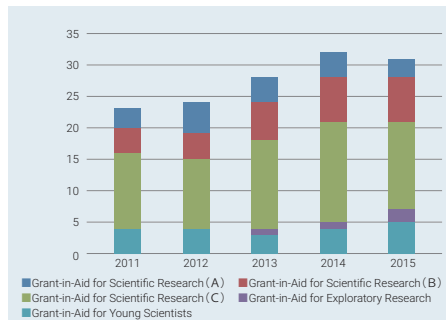
## NUMBER OF DEGREES CONFERRED

Academic Year	2011	2012	2013	2014	2015
Bachelor's Degree	258	258	291	261	257
Master's Degree	35	41	64	54	44
Doctoral Degree	41	32	14	30	25

## COMPETITIVE GRANTS AND EXTERNAL FUNDS



## NUMBER OF PROJECTS ADOPTED



## CAREER PLACEMENTS OF UNDERGRADUATES

Academic Year	2011	2012	2013	2014	2015
Construction	0	0	3	0	3
Manufacturing	44	41	54	44	44
Electricity/Gas	7	11	6	10	3
Information	18	19	23	23	8
Transport	11	8	15	19	12
Wholesale	25	19	19	18	24
Finance/Insurance	55	62	65	62	64
Real Estate	3	2	4	4	3
Academic Research	28	10	16	22	0
Restaurant/Hotel	0	2	0	0	2
Education	2	5	6	2	11
Public Agency	17	23	16	8	8
Service/Other sectors	7	7	17	10	29
Master's Program	19	23	20	26	21
Others	22	26	27	13	25
<b>Total</b>	<b>258</b>	<b>258</b>	<b>291</b>	<b>261</b>	<b>257</b>

## CAREER PLACEMENTS OF MASTER'S PROGRAM GRADUATES

Academic Year	2011	2012	2013	2014	2015
Doctoral Program	18	19	29	23	15
Public Agency	0	2	1	0	2
Industry	11	11	26	22	16
Others	6	9	8	9	11
<b>Total</b>	<b>35</b>	<b>41</b>	<b>64</b>	<b>54</b>	<b>44</b>

## CAREER PLACEMENTS OF DOCTORAL PROGRAM GRADUATES

Academic Year	2011	2012	2013	2014	2015
University or Research Institution	19	12	15	19	14
Public Agency	0	0	0	0	0
Industry	1	4	2	1	7
Others	9	10	3	3	7
<b>Total</b>	<b>29</b>	<b>26</b>	<b>20</b>	<b>23</b>	<b>28</b>

## STUDENTS FROM ABROAD

Region	Country	Under-graduates	Master's Program	Doctoral Program	NonDegree Program	Total	
Asia	China, P.R.	13	45	29	1	88	
	Hong Kong		1		1	2	
	Indonesia		2	2	1	5	
	Korea, R	31	6	3	3	43	
	Malaysia			1		1	
	Mongolia		1			1	
	Philippines		1			1	
	Singapore				3	3	
	Taiwan	1		1	3	5	
	Thailand		1	1		2	
	Viet Nam	1	2	2		5	
	North America	USA		1	1		2
Latin America	Mexico			1		1	
Europe	Bulgaria	1				1	
	Georgia			1		1	
	Germany				5	5	
	Hungry			1		1	
	Italy		1			1	
	Kazakhstan, R	1				1	
	Switzerland			1		1	
	UK		1			1	
	Oceania	Australia				2	2
	New Zealand			1		1	
Middle East	Egypt		1			1	
Turkey			1		1		
Africa	South Africa			1		1	

## STUDENTS GOING ABROAD (2014.04~2015.03)

Region	Country	Under-graduates	Master's Program	Doctoral Program	Total
Asia	Buhtan	1			1
	China, P.R.	9		1	10
	Hong Kong	2			2
	Indonesia	2	1	1	4
	Korea, R	6			6
	Malaysia			1	1
	Myanmar			1	1
	Philippines			1	1
	Singapore	1			1
	Taiwan	3			3
Thailand	3		2	5	
Viet Nam	1		2	3	
North America	Canada	3			3
USA	5		3	8	
Europe	France	6			6
	Germany	5	1		6
	Netherlands			3	3
	Spain		1		1
	Sweden	1			1
	Switzerland	1			1
	UK	8	1	1	10
Middle East	Turkey	1			1
Oceania	Australia	2	1		3

## PARTNER UNIVERSITIES AND INSTITUTES

Region	Country	Partner Universities and Institutes
Asia	China, P.R.	Chinese Academy of Sciences (Institute of Economics)
		Fudan University (Center for Japanese Studies)
		Fudan University (School of Economics)
		Peking University (Guanghua School of Management)
		Peking University (School of Economics)
		Renmin University of China (School of Economics)
	Indonesia	Universitas Gadjah Mada (Faculty of Economics and Business)
	Korea, R	Kyungpook National University (College of Economics and Business Administration)
	Philippines	University of the Philippines Los Baños
	Singapore	Singapore Management University
Taiwan	National Chengchi University (College of Social Sciences)	
	National Taiwan University (College of Liberal Arts)	
	National Taiwan University (College of Social Sciences)	
	Chulalongkorn University (Faculty of Economics)	
Thailand	Chiang Mai University (Faculty of Economics)	
	Thammasat University (Pridi Banomyong International College)	
	Thammasat University (Faculty of Economics)	
Europe	Belgium	KU Leuven Faculty of Economics and Business
	Bulgaria	University of National and World Economy
	France	Université Paris-Dauphine
	Germany	Johann-Wolfgang-Goethe-Universität Frankfurt am Main (Faculty of Economics and Business Administration)
		Heidelberg University (Heidelberg Centre For Transcultural Studies And Cluster Of Excellence "Asia and Europe In A Global Context")
	Netherlands	Wageningen University
	Sweden	Jönköping University (Jönköping International Business School)
Middle East	Turkey	Ege University (Graduate School of Economics, Department of Economics)
North America	USA	Harvard-Yenching Institute



# At a Glance

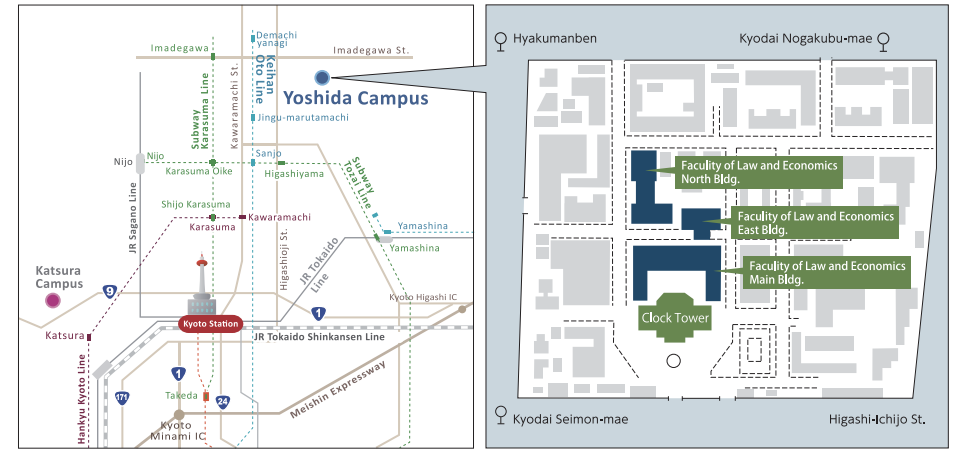
	Faculty of Economics	Graduate School of Economics	
Established	1919	1953	
Enrollment	1,145	241	
Admissions	240	44	
Teaching Staff	58		
	Bachelor	Master	Doctor
Program Years	4	2	3
Credits Required	140*	30 with Thesis	
Degrees Conferred	22,907	1,737	1,006
Location	Yoshida Campus		

\*124 for those who enrolled in 2015 or before



# Access

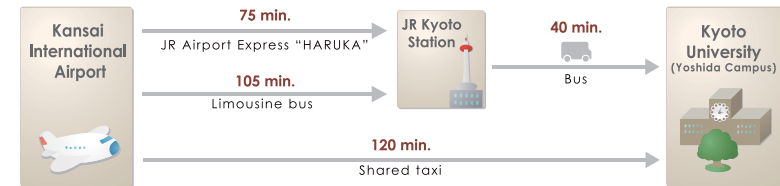
## Map



# History

- 1897 Kyoto Imperial University founded.
- 1900 First economics lecture (*Public Finance*) delivered at the College of Law.
- 1915 *Keizai Ronsō* first published.
- 1919 Faculty of Economics established.
- 1926 *The Kyoto University Economic Review* first published (later renamed *The Kyoto Economic Review*).
- 1948 Survey and Resources Office established (later renamed the Economic Research Office).
- 1949 Kyoto University reorganized under the new educational system.
- 1953 Graduate School of Economics established.
- 1962 Kyoto Institute of Economic Research established.
- 1984 Special Admission for International Applicants and Third Year Admission introduced.
- 1988 Essay-type entrance examination initiated.
- 2000 Graduate School of Economics Project Center established.
- 2002 Shanghai Center established (later renamed Center for East Asian Economic Studies).
- 2004 National University Corporation Kyoto University established.
- 2006 Graduate School of Management and School of Government established.
- 2009 East Asia International Human Resource Development Course established (later renamed International Graduate Program for East Asia Sustainable Economic Development Studies).
- 2014 Kyoto University selected for MEXT Top Global University Project.

## Airport



## Bus

Station	Bus Stop	Bus #	Bound for	Get off at	Approx. minutes
Kyoto JR/Kintetsu	Kyoto Eki-mae	17	Kinrin-Shako via Kawaramachi Street	Hyakumanben	35
		206	Kitaoji Bus Terminal via Higashiyama Street	Kyodai Seimon-mae	
			Taxi		30